

Health@Home –

an e-service model for disease prevention and healthcare in the home

Milon Gupta, Eurescom
gupta@eurescom.eu

eHealth 2008
9 September 2008
London, UK



Overview

- Rationale
- Stakeholders
- Service model
- Feasibility
- Conclusions

Rationale – Why Health@Home?





Ageing of the European society





Chronic Diseases on the rise





Unhealthy Lifestyle on the rise



Cost Explosion





Solution

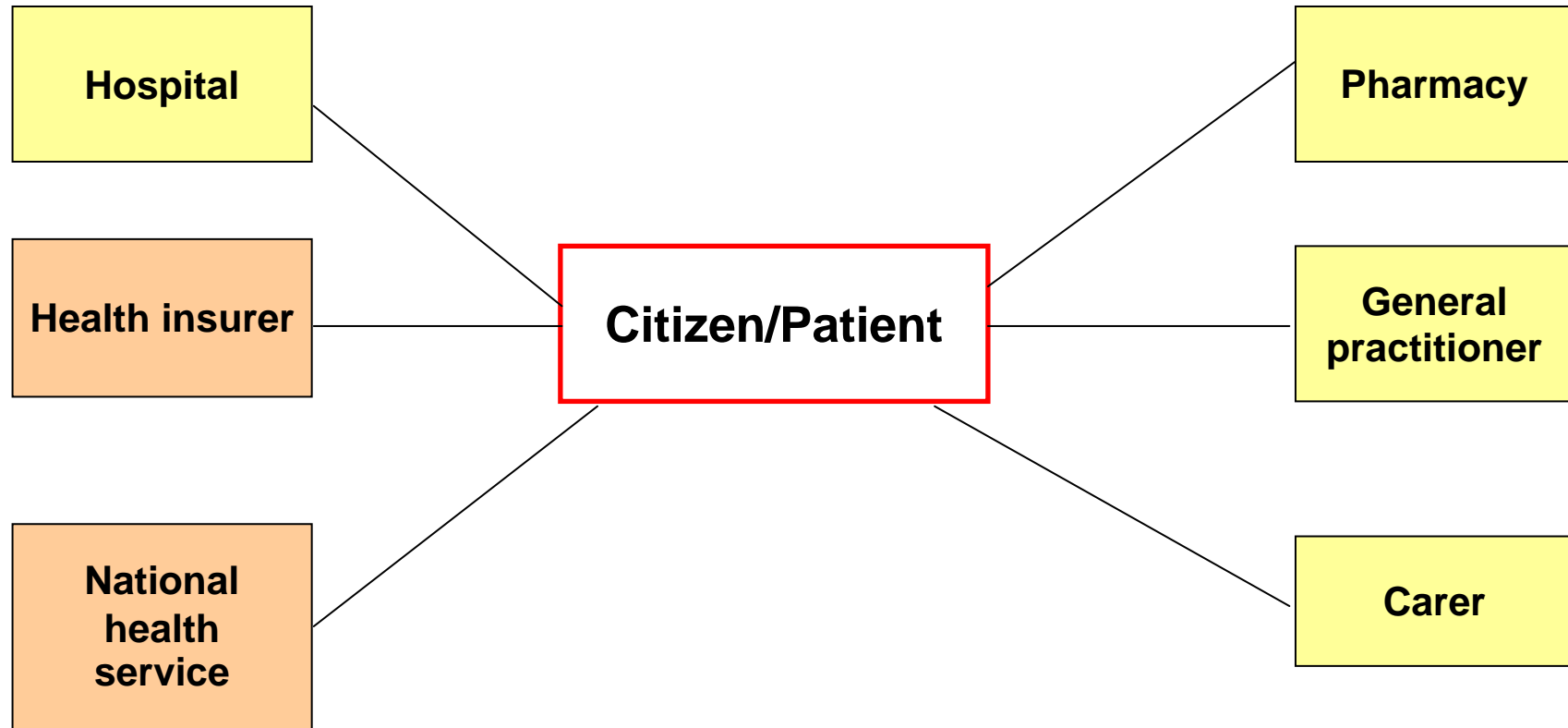
**Bring ICT-enabled prevention
and healthcare to the home**



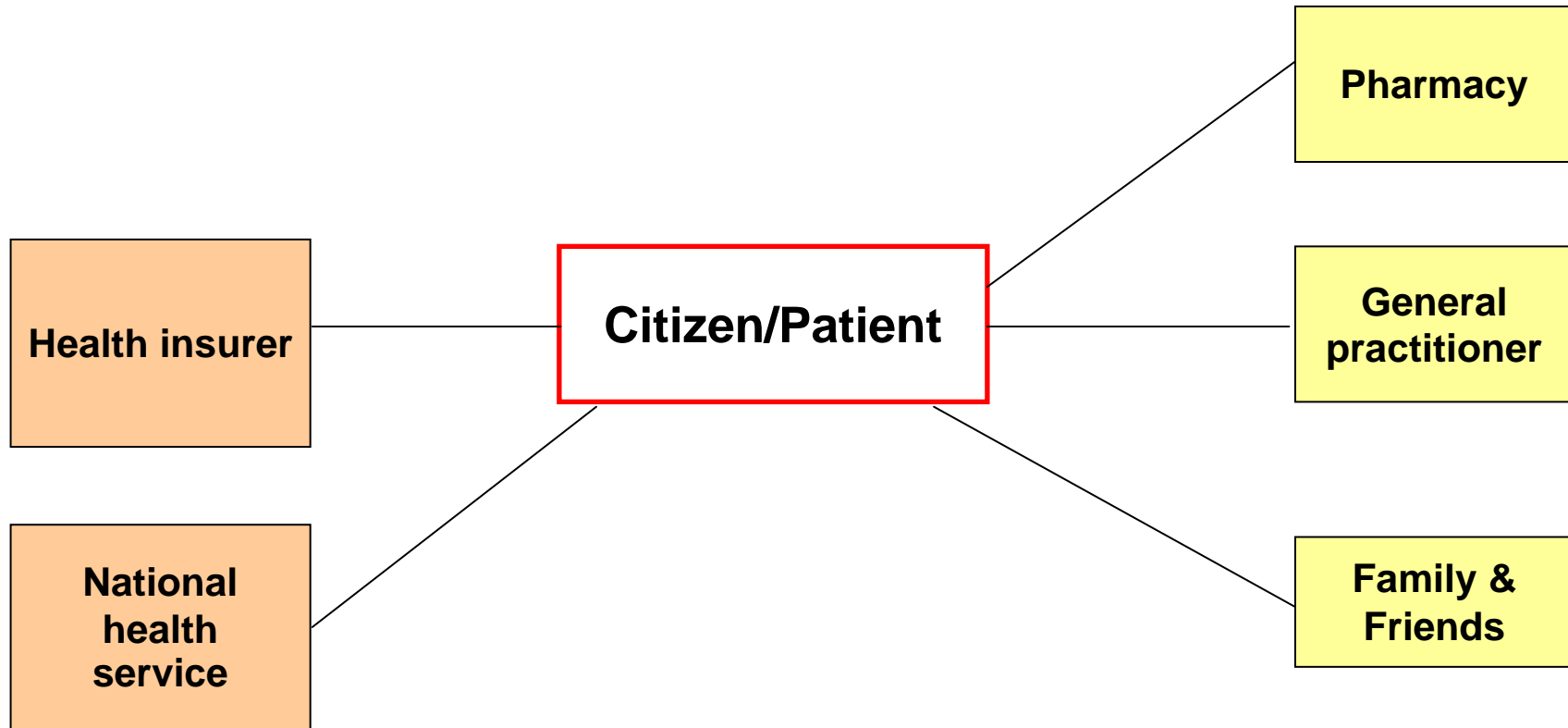
Stakeholders in chronic diseases and prevention



Stakeholders – Chronic diseases



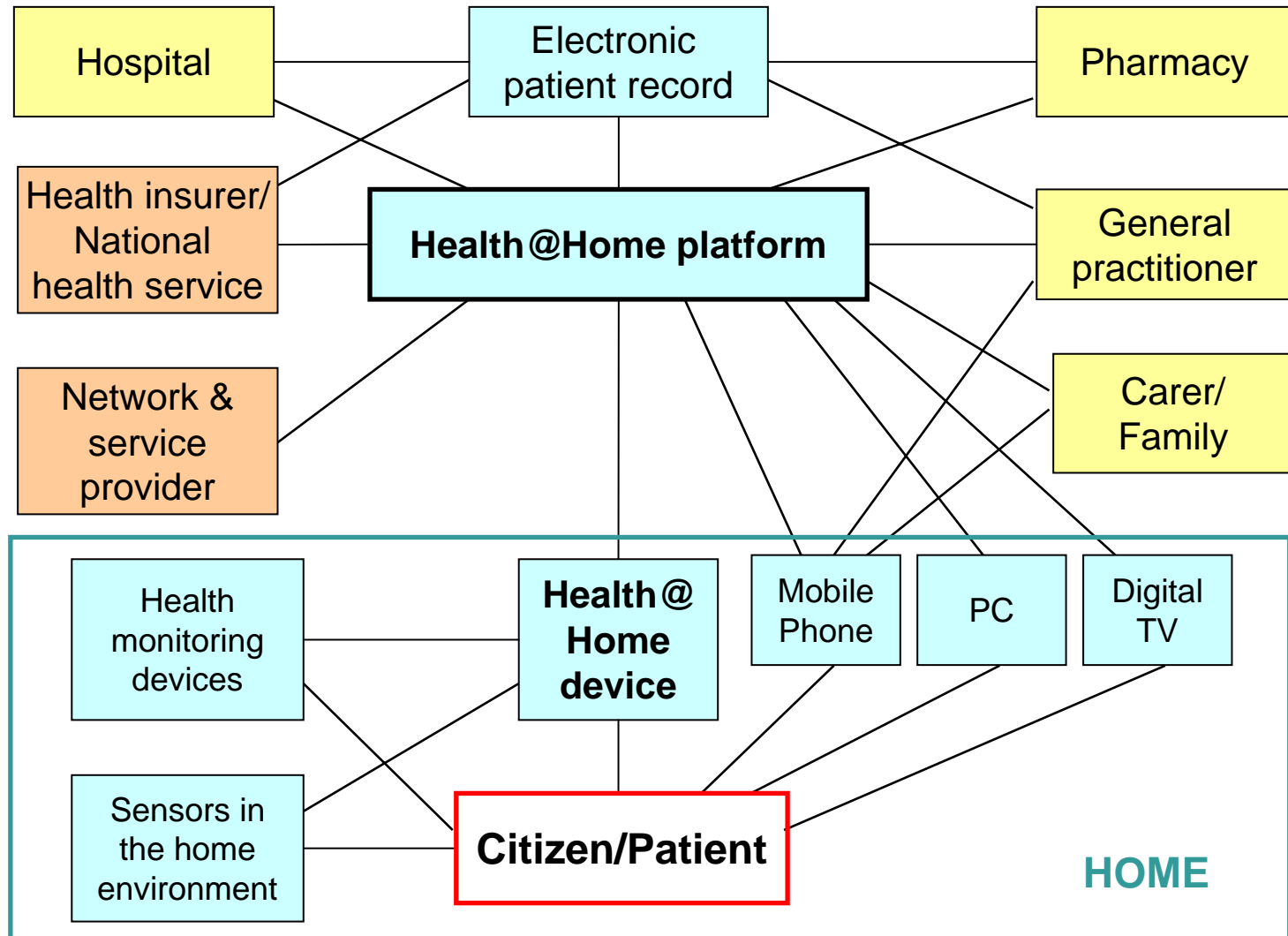
Stakeholders - Prevention



Health@Home service model



How the service model works





Characteristics of the model

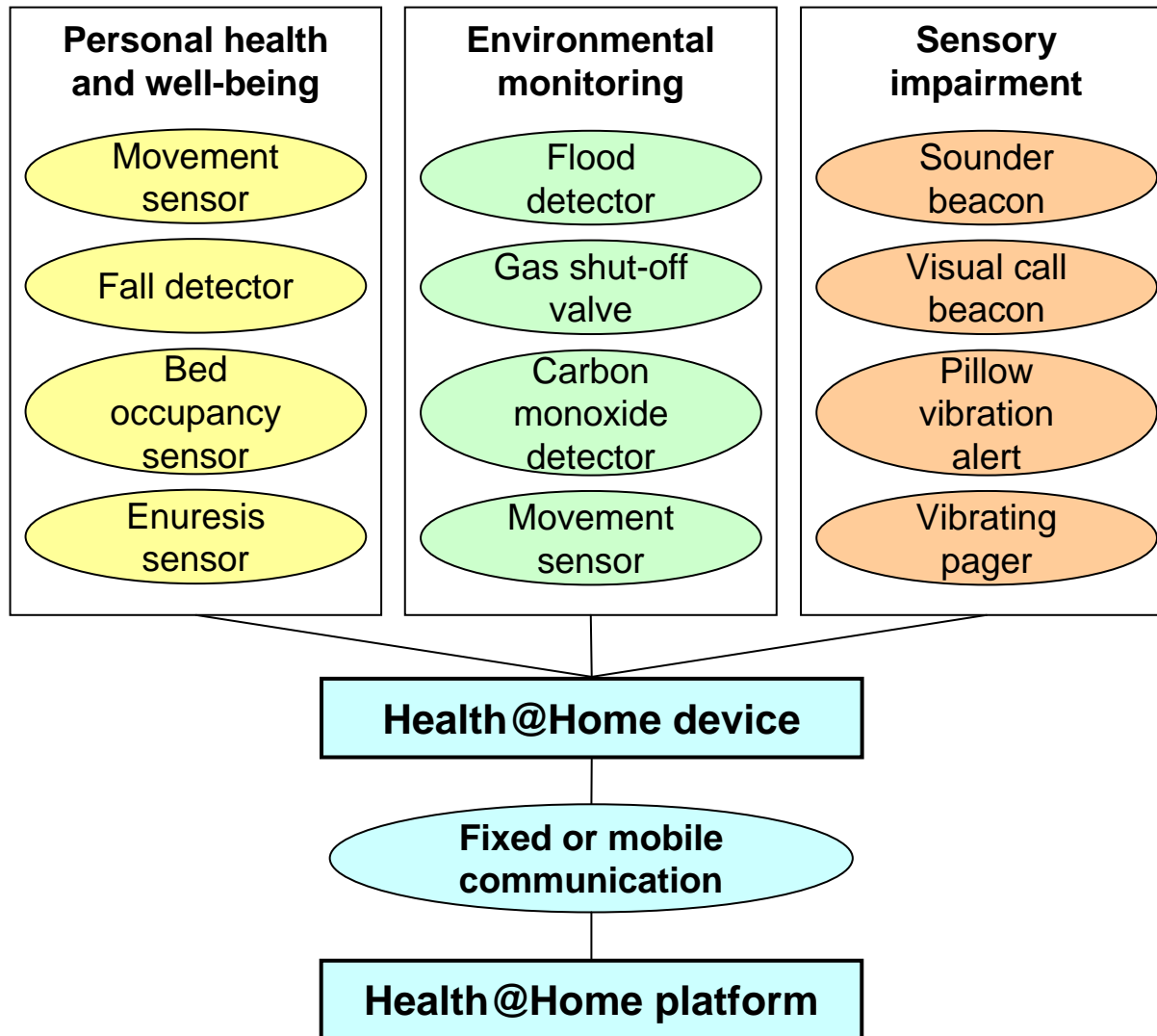
- Based on open standards
- Multimodal access via multiple devices
- Linked to electronic health record
- Customisable to personal user needs
- Modular approach to adapt to different care conditions
- Mobility and portability
- Role-based access rights



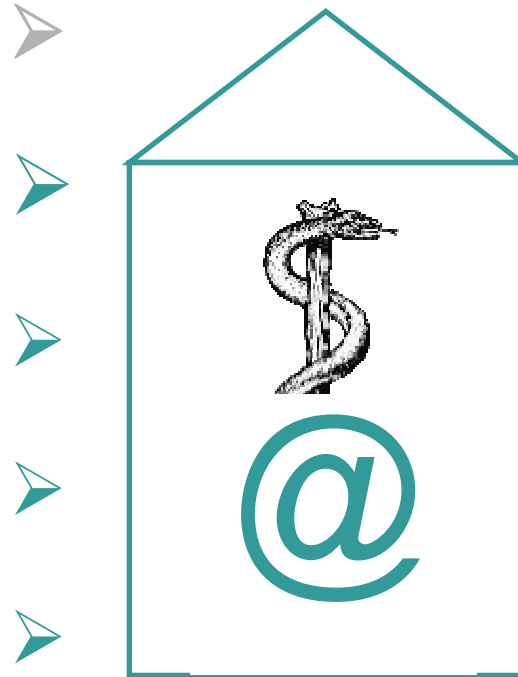
Wide range of services

- Monitoring of personal health factors
- Monitoring of patient environment
- Automated analysis of personal health data
- Automated alerts, e.g. medication reminders
- Support for behavioural changes (e.g. diet)

Sensors in the Health@Home model



Feasibility of the Health@Home model





Critical technical factors

- Integration of technologies and devices
- Standardisation
- Interoperability

- Privacy, security and data protection
- Scalability and reliability
- Mobility



Non-technical barriers

- Inappropriate regulation
- Market fragmentation
- Lack of financial resources
- Low user acceptance



Drivers

- Increase of chronic diseases
- Cost pressure
- Patient needs

- Advances in home networking
- Progress in standardisation

Conclusions





3 main conclusions

- Health@Home – a promising model for integration of prevention and healthcare
- Implementation of Health@Home model will be challenging due to interoperability issues
- Pressure towards a patient-empowering Health@Home service will grow



Acknowledgement

➤ Co-authors of the Health@Home paper:

Laure Chotard, France Telecom Orange Labs

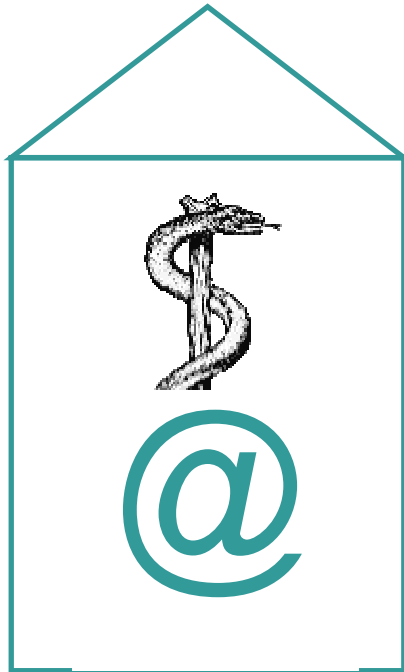
Ólafur Ingbórsson, Síminn R&D

João Bastos, Portugal Telecom Inovação

Isabel Borges, Portugal Telecom Inovação

➤ Participants in Eurescom study P1753 -
Understanding e-health and its promises for
telcos:

Síminn R&D, France Telecom Orange Labs, Portugal
Telecom Inovação, Telenor R&D, Austria Telekom



Contact

Milon Gupta

Eurescom GmbH

Heidelberg, Germany

Phone: +49 6221 989 121

E-mail: gupta@eurescom.eu

Website: www.eurescom.eu